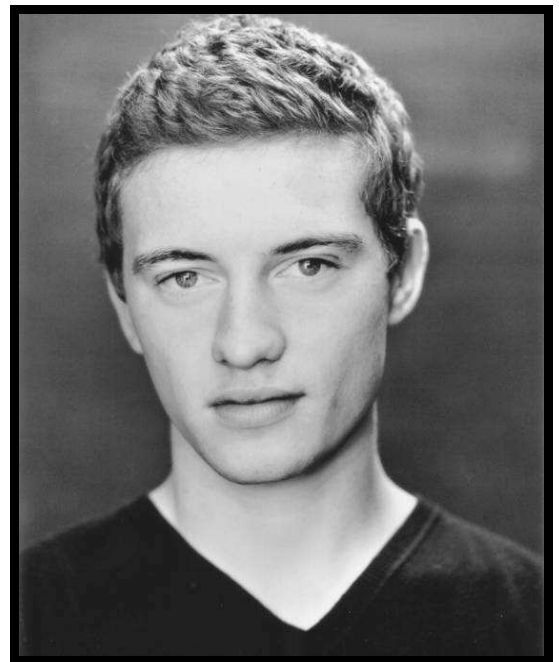


MATTHEW ABRAM



c/o Principal's Office, LAMDA, 155 Talgarth Road, Barons Court, London W14 9DA
Tel: (020) 8834 0502 E-mail: principal@lamda.org.uk

D.O.B: 10.07.1988 **Height:** 5'10" **Hair:** Light Brown **Eyes:** Blue **Voice:** Baritone

TRAINING LAMDA - The London Academy of Music and Dramatic Art [*B.A. (Hons) Three Year Acting Course, 2006-2009*]

Parts played at LAMDA

Ace	<i>Gas Station Angel</i>	Gari Jones
Ian	<i>Speculators</i>	Joseph Blatchley
Local Lad / Company	<i>Tommy</i>	John Baxter
Dromio of Ephesus	<i>The Comedy Of Errors</i>	James Kerr
Tony / Immigration Officer	<i>A View From The Bridge</i>	Colin Cook
Potapenko	<i>Nina</i>	Matthew Peover
MacHeath / Chorus	<i>Pennies 'n' Beggars</i>	Anne Durham & Jennifer Tatam
Fedotik / Ferapont	<i>Three Sisters</i>	Jenny Lipman
Tom Fashion	<i>A Trip to Scarborough</i>	Tina Marian
Demetrius	<i>A Midsummer Night's Dream</i>	Aaron Mullen
Chorus	<i>Oedipus Tyrannos</i>	John Baxter
Soranzo	<i>'Tis Pity She's A Whore</i>	James Kerr

Other Experience

Runshaw College

Ralph	<i>Our Country's Good</i>	Martin Gaskell
Lysander	<i>A Midsummer Night's Dream</i>	Alison Gardener
Tupolski	<i>The Pillowman</i>	Martin Lee
Edward	<i>Cause Celebre</i>	Elsbeth Fisher
Oberon	<i>A Midsummer Night's Dream</i>	Steven Hughes-Altey

SKILLS Stage Combat: Level Three [Advanced] Gold Certificate of the British Academy of Dramatic Combat

Dance: Basic Historic, Ballroom, Tap, Flamenco & Jazz

Sport: Football (Preston North End & Liverpool F.C. Academy)

Full Clean Driving Licence

DIALECTS Lancashire [*native*], RP*, RP (Heightened), Yorkshire*, Edinburgh, Liverpool*, Welsh (Llanelli), Cockney & American (General & New York)

*Accredited to a native standard by Charmian Hoare